

Anti-H_CD200 hlgG Antibody(Samalizumab)

Product information

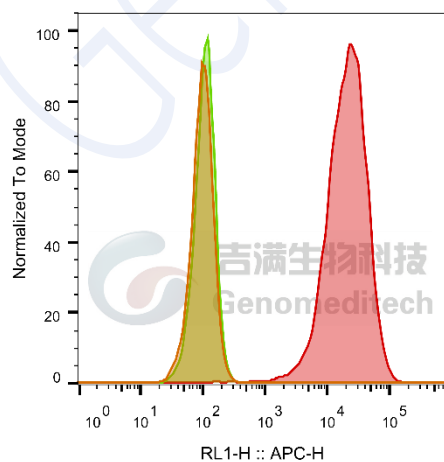
GM-48495AB-10	10 µg
GM-48495AB-100	100 µg
GM-48495AB-1000	1 mg

Antibody Information

Species Reactivity	Human
Clone	Samalizumab
Source/Isotype	Monoclonal human IgG2-G4 - kappa
Application	Flow cytometry;
Other Names	MOX1, MOX2, MRC, OX-2
Gene ID	P41217-1 (human)
Storage	Store at 2-8°C short term (1-2 weeks).Store at ≤ -20°C long term. Avoid repeated freeze-thaw.
Formulation	Phosphate-buffered solution, pH 7.2.
Endotoxin	< 1 EU/mg, determined by LAL gel clotting assay

Data Examples

Flow cytometry H_CD200 CHO-K1 Cell Line (Catalog # GM-C25422) was stained with Anti-H_CD200 hlgG Antibody(Samalizumab) or isotype control antibody.



SampleID	Geometric Mean : RL1-H
CHO-K1 anti-H_CD200+APC-2nd Ab	97.3
CHO-K1 H_CD200 H_IgG+APC-2nd Ab	107
CHO-K1 H_CD200 anti-H_CD200+APC-2nd Ab	19089

Fig. FACS

Version:0.3.2.240521